

OPERATION HORMUZ

MISSION 10 PROM NIGHT

BRIEFING MATERIAL (CLASSIFIED)



TASK ID: ZW-104367

USS CVN-71

VFA-97 WARHAWKS

2011.06.30



SITUATION UPDATE

In the dynamic theater of operations on the eastern frontline, the US Navy aviators executed a productive Close Air Support operation, significantly bolstering the forward momentum of the USMC 4th, 5th, and 6th Regiments. This critical operation facilitated the ground troops' advance from Minab to Naband River, positioning them on the outskirts of Bandar Abbas City, approximately 13 kilometers from the Bandar Abbas International Airport, marking a significant stride in controlling vital logistics and mobility channels in the region. Conversely, the western frontline encountered formidable resistance. The ground forces' attempt to penetrate the Jamal Ahmad Old Industrial Zone was met with strong defense from Iranian Army units. This area has become a linchpin in the defensive strategy of the adversary, impeding our ground assault and necessitating a recalibration of our tactical approach. Simultaneously, the Russian continues its unabated support of the Iranian military regime, sending supplies to Bandar Abbas city via railway in the North Corridor. Recent intelligence reports confirmed the arrival of four trains at the Bandar Abbas train station the preceding night, heavily laden with armaments, fuel, and other military equipment. Given the dual use of this facility as a pivotal civilian infrastructure, the strategic implications of targeting it directly are complex. Consequently, intercepting these supply trains before their arrival in the city presents itself as the immediate tactical course of action. Furthermore, the Russian mercenary group has dispatched several cargo planes to LAR Air Base, the operational center of Iran's 3rd Air Wing. This development has resulted in an uptick in enemy sortie rates. The destruction of the S-300 air-defense system guarding LAR Air Base on Day 9 marked a tactical victory, yet subsequent missions aimed at crippling the base's military assets were thwarted by the proficient DCA operations of the Iranian Air Force. This effectiveness is ostensibly attributed to the strategic and intelligence support rendered by Russian experts. In response to these challenges, on Day 10, the Navy and the Air Force decided to make a joint mission under the night's cover, with the Air Force making a feint attack from the south coastline, like what they had done twice the previous day, luring the Iranian Air Force's CAP flights away from LAR Air Base. Concurrently, the Navy counterpart will initiate a swift precision air strike from the east side before the enemy could make an effective response. As Sun Tzu said, let your plans be dark and impenetrable as night, and when you move, fall like a thunderbolt.



MISSION BRIEFING

Hawk 1-1 is the Air Mission Commander (AMC), whilst Hawk 1-2 is the Deputy AMC. The Hawks flights are assigned for deep precision air strike mission with AGM-84 SLAM loadout. All aircraft will start cold on deck, comms check will be performed in about 1 minute after right engine started, both teams to keep PRI COMM at Green 1, and Hawk 1 to switch AUX COMM to Yellow 1 and Hawk 2 to switch AUX COMM to Yellow 2. A/A Bullseye point is at WP2 (ROCK). Joker fuel is 6,500 lbs and Bingo fuel is 6,000 lbs. Make sure all members in Hawks flights are in your datalink network. Hawk 1 are recommended to input targets coordinates into their AGM-84E SLAM missiles are those primary targets are static, and just in case we need to launch and leave under certain scenarios. Pitch dark night, no clouds, no moon, we have to rely on our NVG, make sure you have tested it.

After being cleared by the taxi director, proceed to your assigned catapult. Case III departure. After KILO, proceed to WP1 (RV) to regroup at 25,000 feet MSL with a speed of 0.6 Mach. Once regrouped, we will push for WP2 (ROCK) and climb to 30,000 MSL with cruise speed of 0.75 Mach. During ingress, we will switch PRI COMM to Red 2 and check in with STRIKE. Radar altimeter bug set to 200 feet for low level fly alert, radar warning set to 3000 feet for night time operation, baro warning set to 10,000 feet to avoid collision with mountains when we orbit. All lights off except for formation lights. Also keep in mind, once external fuel tanks are empty, dump them.

At WP2 (ROCK), we will contact STRIKE for final words, once mission is cleared to go, we will Fence In and push for WP3 (ACT). Simultaneously, the Ford Flights from the Air Force will be holding at Sirri Island, 42nm to the south coastline of Iran. When we hear codeword "ACTION" from STRIKE, we will make a sharp descend to 300 feet AGL, but we need to stay clear of Bandar Abbas City and make sure that we have passed Bandar Abbas Airport before descending, as there are AAA and Manpads in the region. Simultaneously, Ford Flights will push north toward Iran's coast. The enemy Air Force has increased their CAP sorties over LAR Air Base. Ford 1 and Ford 2 will make a feint attack, luring the enemy fighter jets away from their CAP station; Ford 3 is carrying with jamming pods and will disrupt the enemy's radar system. After passing WP3 (ACT), we should be already at 300 feet AGL level. EMCON level 3 to apply, meaning, no radar use and no radio transmit until we reach WP7 (ATT). Our low level fly is from WP3 to WP6, we will use 450 GS as our contract speed during this low-level fly phase. Trailing formation with 200 feet interval. WP4 (RED) is our decision point. If Ford 1 and Ford 2 successfully lured the enemy CAP away. STRIKE will transmit codeword "PROM NIGHT" on radio, indicating that it's safe for us to initiate the attack. Otherwise, we will hold at WP4, and abort the mission after 10 minutes on radio silence.

PART A. MISSION BRIEFING

TASK ID: ZW-104367



Once "PROM NIGHT" declared, we will proceed from WP4 to WP5, passing through a narrow valley and entering into to Sarzeh Basin. After passing WP5, we will increase our speed from 450 knots to 550 knots, preparing for the pop up attack. Make final checks on your weapon and make sure the selected missile is paired with datalink pod, use High Flight Level. At WP6 (POP), we will make a pop up with full afterburner. Hawk 1 to climb to 16,000 feet and Hawk 2 to climb to 15,000 feet. After passing WP7 (ATT), we are good to release the cruise missiles. Optimal launching speed is above 0.9 Mach, and minimum launching speed is 0.8 Mach. After first missile launched, check left into a orbit with MIL power, and release the second missile once complete a 360 degree turn. Then decrease speed to 0.6 Mach and continue the left orbit, and use your AWW-13 Linkpod to control terminal attack on the assigned targets. For Hawk 1, the targets are static, but we still need to use the datalink to confirm the impact. For Hawk 2, the targets are mobile, and man-in-loop must be used to guide the missile on the correct targets. Especially for Target B3-B6, our real targets are Iran's F14 aircraft inside the hangars, so if you see the Tomcat is outside the hangar, aim at the aircraft, not the hangar itself.

We don't know how long will the Iranian Air Force realize our real attack is from the east, but it's expected that we will have 15 to 20 minutes window to finish the strike and haul our ass back. Once the attack is completed, we will egress via WP9 (EGR). If we have enemy fighters chasing us, don't look back as we don't have spare fuels for air combat. Texaco 1 and Arco 1 will be available for air-to-air refueling after WP10 (WET), but let's try to do a good fuel management. Again, nighttime low-level fly is extremely dangerous, everyone must pay extra cautions and read the check-list one more time during the cold start. Good Luck!

[Designer's Note]

1. Hawk 1-1 (Tail#211) is Mission Commander and must be seated by a Player.
2. A backup Hawk 3 Flight with 4 F/A-18C is hot on ramp with air-to-air weapons for escort role, but players can change weapon loadout for CAS or other role as needed.
3. Recovery tankers are ready on deck and will be launched upon request via F10 Radio Menu on your egress leg.
4. AI Hawk 2 will be activated if no Players sit into Hawk 2 Flight (after all Hawk 1 members outside DME-1), Players can use F10 Radio Menu to deactivate AI Hawk 2.
5. It requires at least 4 Players to complete this mission (Target A1-A8), however, if only 2 Players available, you can consider to change weapon loadout during mission start, by replacing two external fuel tanks with two AGM-84E SLAM, however, Players must perform night-time air-to-air refueling during egress phase.

PART B. TACTICAL INFORMATION

TASK ID: ZW-104367

**BASIC INFORMATION**

START TIME 30-JUN-2011 2300LT (1900UTC)

SCHD LAU TIME 2315LT CASE III DEP LOC N2534E5659

EXP REC TIME 0050LT CASE III REC LOC N2519E5722

HOME FREQ 305AM TCN 71X ILS 11 LINK4 336

WX CLR SR 0528LT SS 1913LT TEMP 26C QNH 2993 WIND 298 12KTS SEA 2 NGT VSBY

MISSION OBJECTIVES

Primary Destroy LAR Air Base Key Military Assets (Group A)

Secondary Destroy LAR Air Base High Value Targets (Group B)

Tertiary N/A

THREAT ANALYSIS

Air to air Iranian Air Force Mig-29 from Lar Airbase; F-14, Mig-29 from Sirjan Airbase

Surface to air SA-11 & SA-2 in LAR Air Base; SA-15, AAA, Manpads in Bandar Abbas
Uncharted short-range mobile SAMs east of LAR Air Base**FLIGHT ROSTER**

FLIGHT	CALLSIGN	TAIL#	ROLE	A/A TCN	DATALINK	LSR CODE
Hawk 1	Hawk 1-1	211	Lead	11X	HK11	1688
	Hawk 1-2	212	Wing	12X	HK12	1688
	Hawk 1-3	213	Lead	13X	HK13	1688
	Hawk 1-4	214	Wing	14X	HK14	1688
Hawk 2	Hawk 2-1	215	Lead	21X	HK21	1688
	Hawk 2-2	216	Wing	22X	HK22	1688
	Hawk 2-3	217	Lead	23X	HK23	1688
	Hawk 2-4	218	Wing	24X	HK24	1688

PACKAGE ELEMENTS

FLIGHT	AIRCRAFT	NO.	TASK	TARGET
Hawk 1	F/A-18C	4	Pinpoint Strike	Group A
Hawk 2	F/A-18C	4	Pinpoint Strike	Group B
Ford 1	F-15C	2	Escort	(Faint Attack)
Ford 2	F-15E	2	Ground Attack	(Faint Attack)
Ford 3	F-16C	2	EW/SEAD	LAR Airbase Radar

SUPPORT FLIGHT

FLIGHT	AIRCRAFT	NO.	TASK	A/A TCN	REMARKS
Magic	E-2D	1	AWACS		Callsign STRIKE
Darkstar	E-3A	1	AWACS		Callsign DARKSTAR
Texaco	KC-135M	1	Refuel	53X	CH10 FL220
Arco	KC-130	1	Refuel	54X	CH11 FL180
Shell 1	S-3B	1	Refuel	51X	CH8
Shell 2	S-3B	1	Refuel	52X	CH9

ALTERNATE AIRFIELD

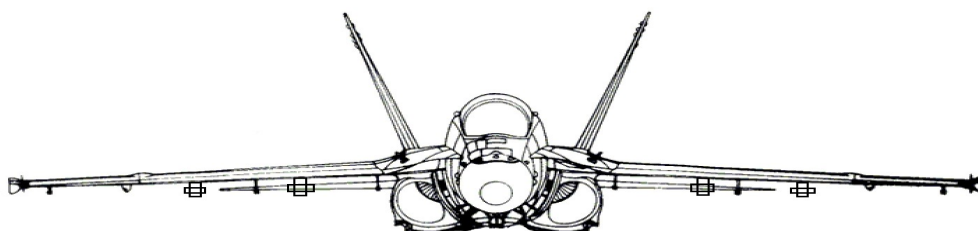
AIRFIELD	FREQUENCY	COORDINATE	REMARKS
Khasab	124.350 AM	N26°10'57" E56°14'37"	Penesuila north tip

PART B. TACTICAL INFORMATION

TASK ID: ZW-104367



LOADOUT



STATION	9	8	7	6	5	4	3	2	1
Hawk 1-1	9X	84E	WT	120C	DL	AFLIR	WT	84E	9X
Hawk 1-2	9X	84E	WT	120C	DL	AFLIR	WT	84E	9X
Hawk 1-3	9X	84E	WT	120C	DL	AFLIR	WT	84E	9X
Hawk 1-4	9X	84E	WT	120C	DL	AFLIR	WT	84E	9X
Hawk 2-1	9X	84E	WT	120C	DL	AFLIR	WT	84E	9X
Hawk 2-2	9X	84E	WT	120C	DL	AFLIR	WT	84E	9X
Hawk 2-3	9X	84E	WT	120C	DL	AFLIR	WT	84E	9X
Hawk 2-4	9X	84E	WT	120C	DL	AFLIR	WT	84E	9X

INTERNAL	GUNS	FLARE	CHAFF	TOTAL FUEL	TOTAL WEIGHT	ADV TRIM
Hawk 1-1	578	60	60	15291 lbs	47111 lbs	17
Hawk 1-2	578	60	60	15291 lbs	47111 lbs	17
Hawk 1-3	578	60	60	15291 lbs	47111 lbs	17
Hawk 1-4	578	60	60	15291 lbs	47111 lbs	17
Hawk 2-1	578	60	60	15291 lbs	47111 lbs	17
Hawk 2-2	578	60	60	15291 lbs	47111 lbs	17
Hawk 2-3	578	60	60	15291 lbs	47111 lbs	17
Hawk 2-4	578	60	60	15291 lbs	47111 lbs	17

RADIO COMMS

L	CODE	AGCY	FREQ	R	CODE	AGCY	FREQ
1	Green 1	Marshal	305.00	1	Green 1	Marshal	305.00
2	Red 1	Strike	264.00	2	Red 1	Strike	264.00
3	Red 2	Guardian	265.00	3	Red 2	Guardian	265.00
4	Red 3	Darkstar	256.00	4	Red 3	Darkstar	256.00
5	Yellow 1	Hawk 1	254.00	5	Yellow 1	Hawk 1	254.00
6	Yellow 2	Hawk 2	250.00	6	Yellow 2	Hawk 2	250.00
7	Yellow 3	Hornet	270.00	7	Yellow 3	Hornet	270.00
8	Violet 1	Shell 1	257.00	8	Violet 1	Shell 1	257.00
9	Violet 2	Shell 2	255.00	9	Violet 2	Shell 2	255.00
10	Violet 3	Texaco	262.00	10	Violet 3	Texaco	262.00
11	Violet 4	Arco	259.00	11	Violet 4	Arco	259.00
12	Orange 1	Devil	268.00	12	Orange 1	Devil	268.00
13	Orange 2	Chevy	269.00	13	Orange 2	Chevy	269.00
14	Orange 3	Check	260.00	14	Orange 3	Check	260.00
15	Blue 1	Raven	263.00	15	Blue 1	Raven	263.00
16	Blue 2	Dodge	261.00	16	Blue 2	Dodge	261.00
17	Blue 3	Ford	267.00	17	Blue 3	Ford	267.00
18	Indigo 1	Trek	251.00	18	Indigo 1	Trek	251.00
19	Indigo 2	Viper	253.00	19	Indigo 2	Viper	253.00
20	Indigo 3	Colt	266.00	20	Indigo 3	Colt	266.00

PART B. TACTICAL INFORMATION

TASK ID: ZW-104367

**FLIGHT PLAN (HAWK 1)**

WP	NAME	TIME	SPEED	ALTITUDE	ACTION	REMARKS
0	LAU	2315L			Launch	Bingo 6000 lbs
1	RV	2320L	0.60M	MSL 25K	Regroup	Exp Push Time 2325L
2	ROCK	2335L	0.75M	MSL 30K	Check in	Bullseye Point
3	ACT	2340L	0.60M	AGL 300ft	Descend	Start Low-level Fly
4	RED	2344L	0.60M	AGL 300ft	Decision	Continue or Abort
5	ENT	2345L	0.60M	AGL 300ft	Enter	Enter valley
6	POP	2347L	0.75M	AGL 300ft	Pop-up	Amstrong
7	ATT	2348L	0.95M	MSL 16K	Attack	Launch & Orbit
8	TGT				Targets	LAR Air Base
9	EGR	0012L	0.80M	MSL 30K	Egress	Egress
10	WET	0015L	0.80M	MSL 30K	Fence out	Feet Wet
11	REC	0050L			Landing	Recovery Tanker Ready

FLIGHT PLAN (HAWK 2)

WP	NAME	TIME	SPEED	ALTITUDE	ACTION	REMARKS
0	LAU	2315L			Launch	Bingo 6000 lbs
1	RV	2320L	0.60M	MSL 25K	Regroup	Exp Push Time 2325L
2	ROCK	2335L	0.75M	MSL 30K	Check In	Bullseye Point
3	ACT	2340L	0.60M	AGL 300ft	Descend	Start Low-level Fly
4	RED	2344L	0.60M	AGL 300ft	Decision	Continue or Abort
5	ENT	2345L	0.60M	AGL 300ft	Enter	Enter valley
6	POP	2347L	0.75M	AGL 300ft	Pop-up	Amstrong
7	ATT	2348L	0.95M	MSL 16K	Attack	Launch & Orbit
8	TGT				Targets	LAR Air Base
9	EGR	0012L	0.80M	MSL 30K	Egress	Fence Out
10	WET	0015L	0.80M	MSL 30K	Landing	Feet Wet
11	REC	0050L			Egress	Recovery Tanker Ready

TARGET LIST

NO.	TYPE	COORDINATES (PRECISE)	ELEVATION	TARGET	PEN
A1	Building	N 27°40'13.70", E 54°22'52.19"	2636 ft	Airbase HQ	Y
A2	Building	N 27°40'17.66", E 54°22'53.88"	2636 ft	CMD Center	Y
A3	Radar	N 27°40'11.19", E 54°23'05.35"	2636 ft	EW Radar	N
A4	Storage	N 27°40'09.38", E 54°22'58.81"	2636 ft	Weapon Store	Y
A5	Tower	N 27°40'13.96", E 54°22'15.35"	2636 ft	Comm Tower	N
A6	Plant	N 27°40'15.69", E 54°22'22.49"	2636 ft	Power Plant	N
A7	Tank	N 27°40'11.61", E 54°22'28.45"	2636 ft	Oil Fuel	N
A8	Tank	N 27°40'20.38", E 54°22'10.05"	2636 ft	Diesel Fuel	N
B1	Aircraft	N 27°40'17.04", E 54°22'44.08"	2636 ft	Awacs Plane	N
B2	Aircraft	N 27°40'15.48", E 54°22'57.07"	2636 ft	Cargo Plane	N
B3	Hangar	N 27°40'14.48", E 54°22'39.72"	2636 ft	F14 in Hangar	Y
B4	Hangar	N 27°40'12.35", E 54°22'38.39"	2636 ft	F14 in Hangar	Y
B5	Hangar	N 27°40'10.46", E 54°22'39.77"	2636 ft	F14 in Hangar	Y
B6	Hangar	N 27°40'13.18", E 54°22'42.52"	2636 ft	F14 in Hangar	Y



FLIGHT PLAN



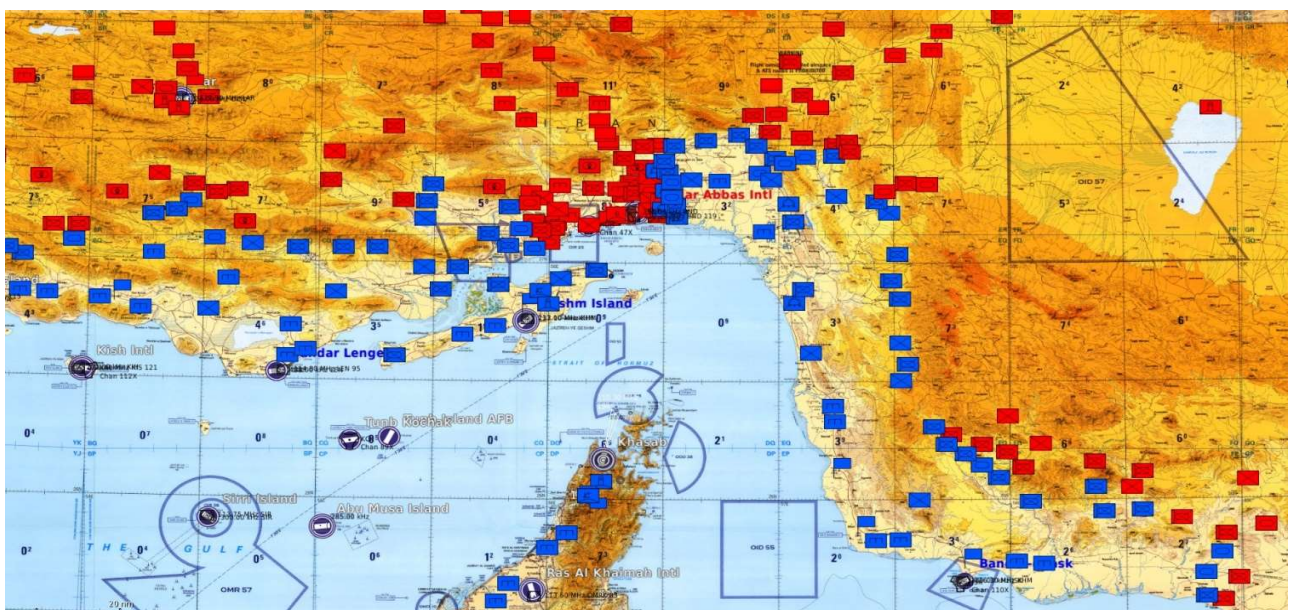
NOTE: WP3-WP6 LOW-LEVEL FLY



AIR OPERATION CHART

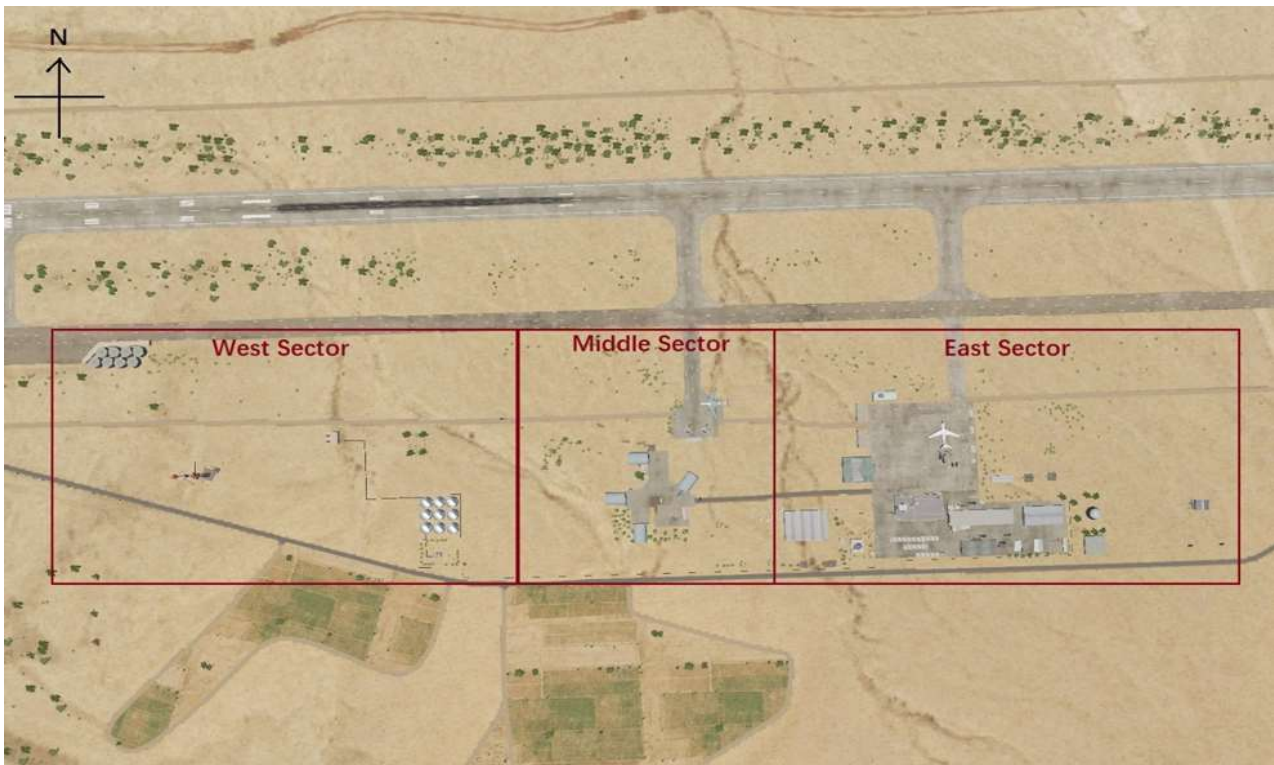


GROUND OPERATION CHART

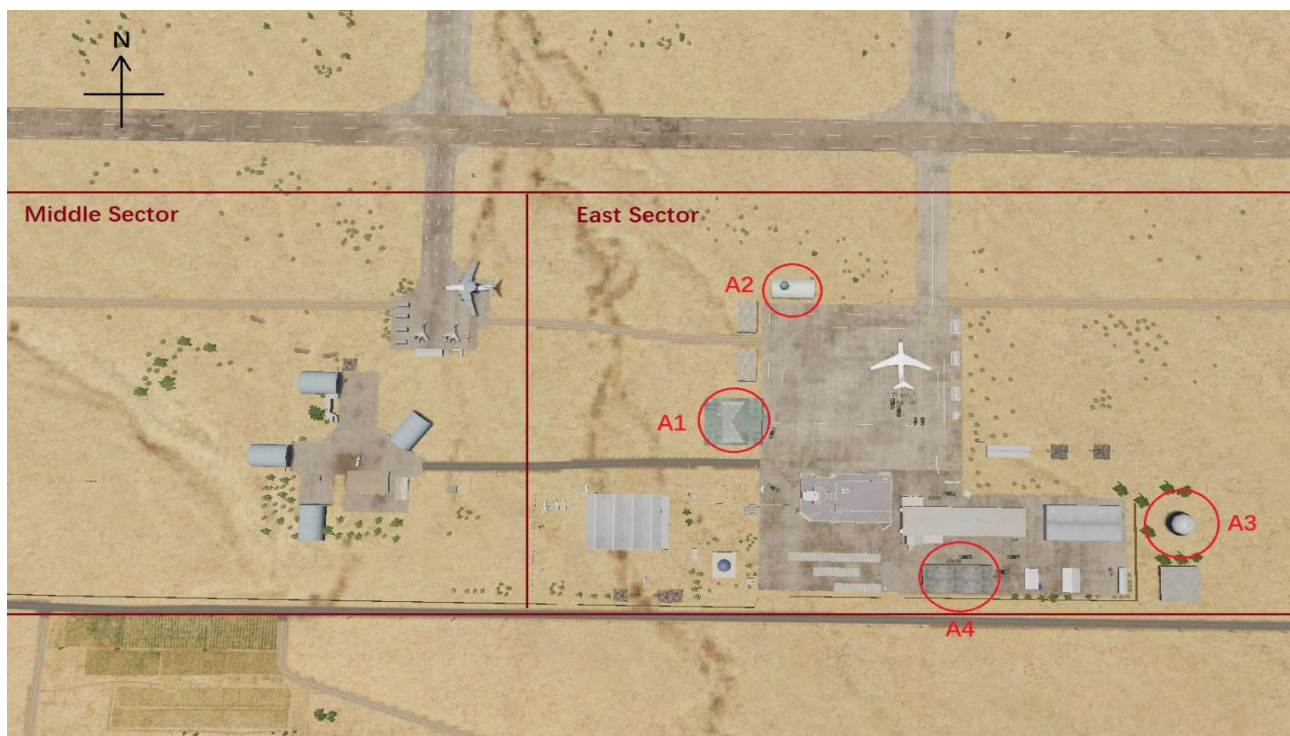




TARGET SATELLITE IMAGES

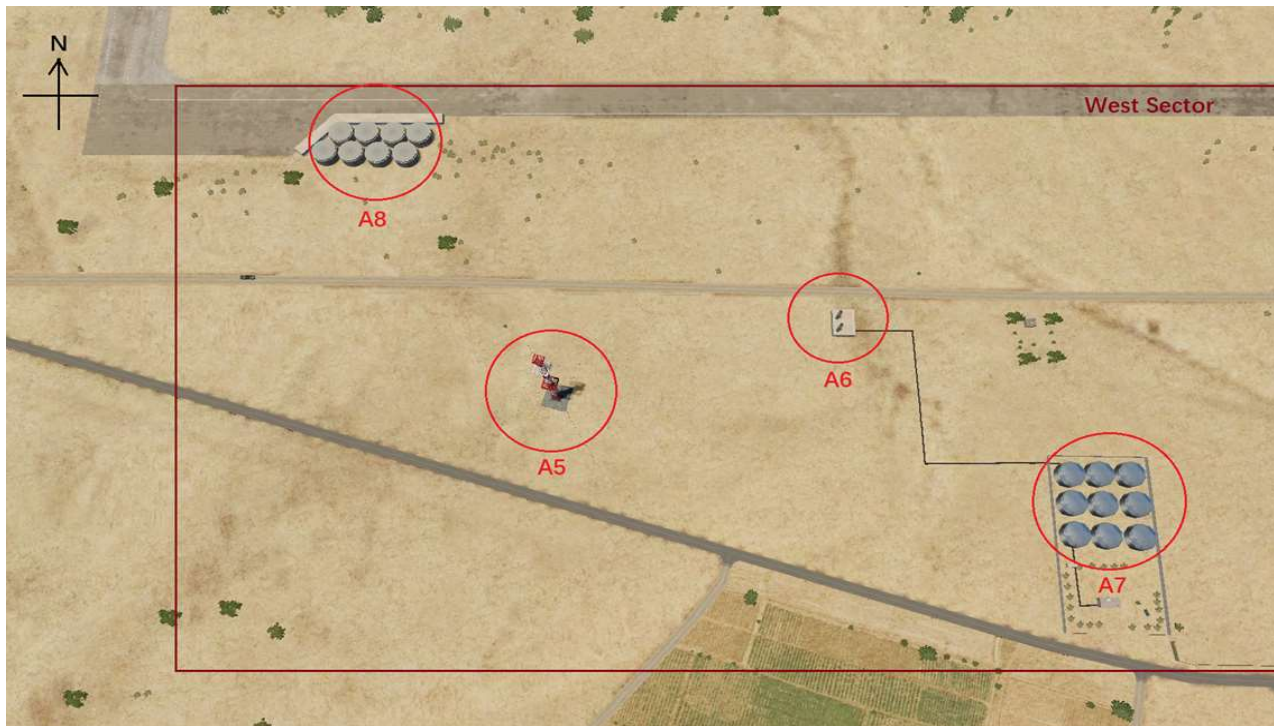


TARGETS ALPHA GROUP (PART 1 EAST SECTOR)





TARGETS ALPHA GROUP (PART 2 WEST SECTOR)



TARGETS BRAVO GROUP (MIDDLE SECTOR & EAST SECTOR)



NOTE Group B Targets are not static; use AWW-13 datalink to search and destroy
For B3-B6 Targets, attack the F14 aircraft if it's outside the hangar